

MONTHLY MEMBERSHIP PROGRESS REPORT

LOCATION REP OF BANGLADESH

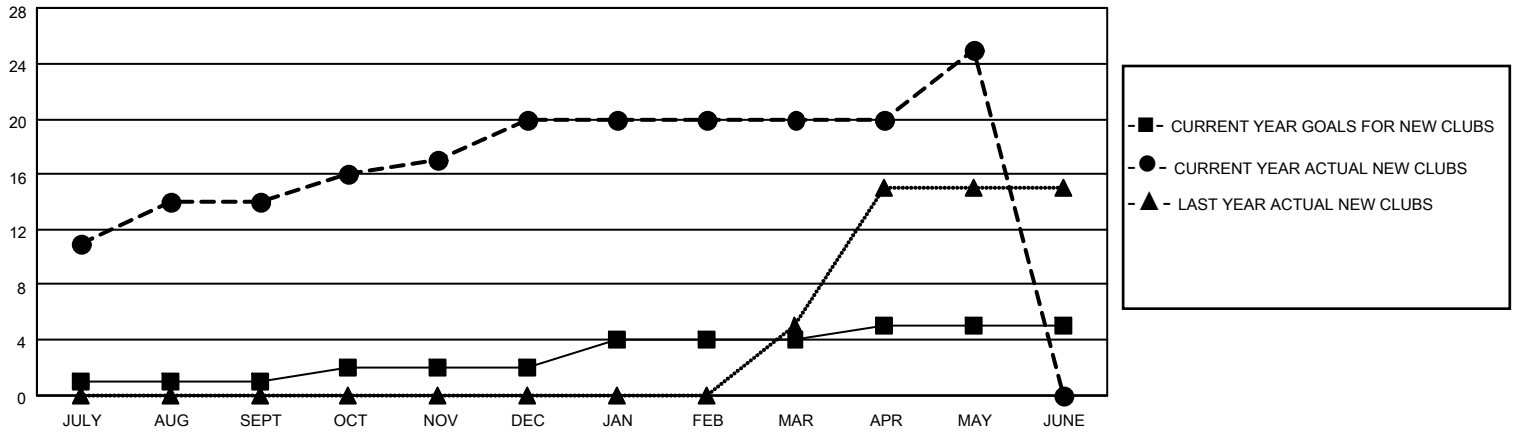
District 315B1

Results as of: 5/31/2021

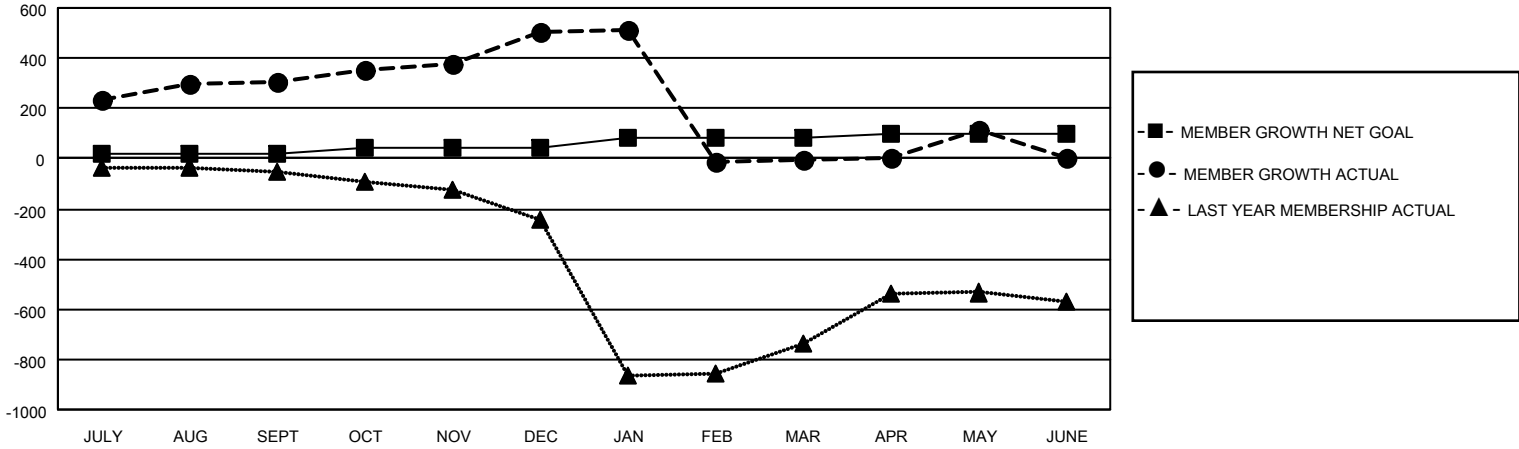
Clubs			
RESULTS FOR 2020-2021			
QUARTER	NEW CLUB GOAL	NEW CLUBS	DROPPED CLUBS
JULY/AUG/SEPT	1	14	0
OCT/NOV/DEC	1	6	0
JAN/FEB/MAR	2	0	22
APR/MAY/JUNE	1	5	0

Members			
RESULTS FOR 2020-2021			
QUARTER	MEMBER GROWTH NET GOAL	MEMBER GROWTH ACTUAL	DROPPED MEMBERS ACTUAL (including transfers)
JULY/AUG/SEPT	20	354	47
OCT/NOV/DEC	20	231	29
JAN/FEB/MAR	40	30	537
APR/MAY/JUNE	20	149	7

GOALS AND ACTUAL NEW CLUBS CUMULATIVE



GOALS AND ACTUAL MEMBERS CUMULATIVE



DROPPED CLUBS: 22

66 CLUBS OF 146 ADDED 1 OR MORE NEW MEMBERS

GENDER DISTRIBUTION

MALE 2,395 (82.64%)
FEMALE 503 (17.36%)

DROPPED MEMBERS

[CLICK HERE FOR CUMULATIVE MEMBERSHIP DATA](#)

DECEASED	3
CLUB CANCELLED	529
OTHER	88
TOTAL	620

TOTAL FAMILY UNIT MEMBERS	851
FAMILY MEMBERS PAYING HALF DUES	603